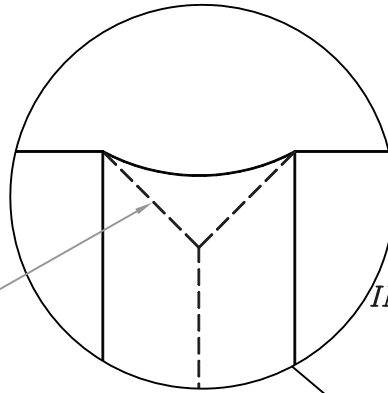
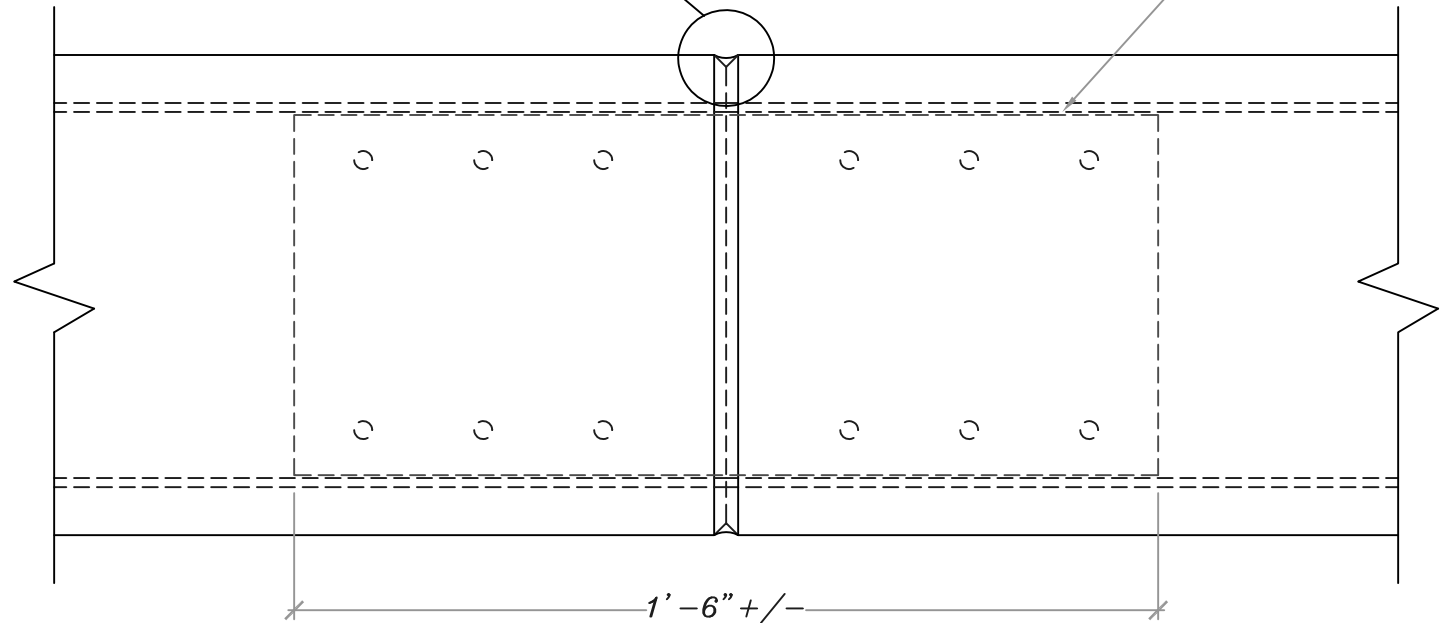
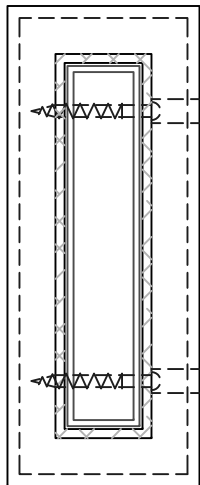


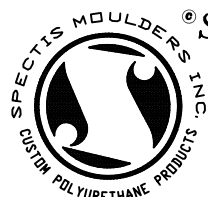
CAULKING IN V-GROVE
@ALL JOINTS BETWEEN TRB & BL
ON ALL SIDES OF BEAMS



FIELD / ON SITE INSTALLATION:
PLACE HALF OF THE ALUM INSERT
IN ONE TRB END AND FASTEN
w/ 9 SELF TAPPING SCREWS
PLACE THE OTHER HALF OF INSERT
IN THE OTHER TRELLIS END AND FASTEN
w/ 9 SELF TAPPING SCREWS
& PATCH ALL HOLES



NOTE: PL PREMIUM ADHESIVE
MUST BE USED ON ALL JOINTS



SPECTIS MOULDERS INC.
1-800-685-9981

NOTES:

1. ALL PRODUCTS ARE DRAWN FOR PRESENTATION PURPOSES, THEREFORE IMAGE MAY VARY SLIGHTLY FROM ACTUAL PART.
2. DRAWING INTENT IS TO INDICATE GENERAL ARRANGEMENT, DESIGN AND INTENT OF WORK IS PARTLY DIAGRAMATIC.
3. SPECTIS RESERVES THE RIGHT TO CHANGE ANY PRODUCT DESIGN WITHOUT NOTIFICATION.

CUSTOMER/PRO. NAME & QUOTE#:		TITLE:	
STANDARD PRODUCTS		TRELLIS EXPANSION JOINT	
BILL OF MAT / PART #:		SCALE:	DATE:
KIT100		$\frac{5}{16} = 1"$	06/10/16
		DWC BY:	REV
		JB	